

ADD POCKETS TO THE TURNER DRESS

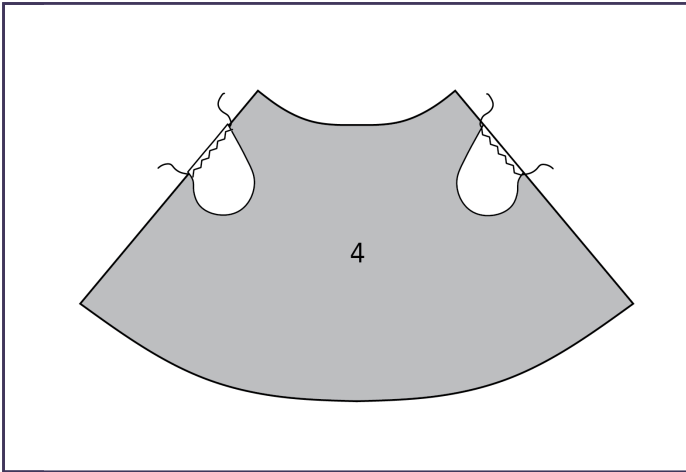
Everyone needs pockets!



JENNY RUSHMORE

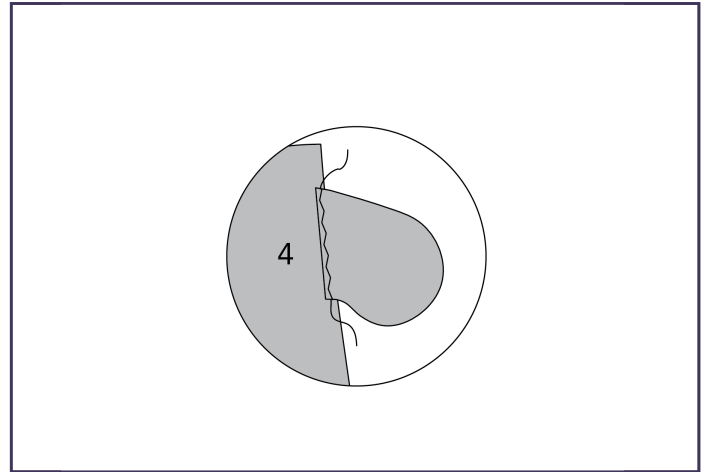
TURNER DRESS

HOW TO ADD POCKETS



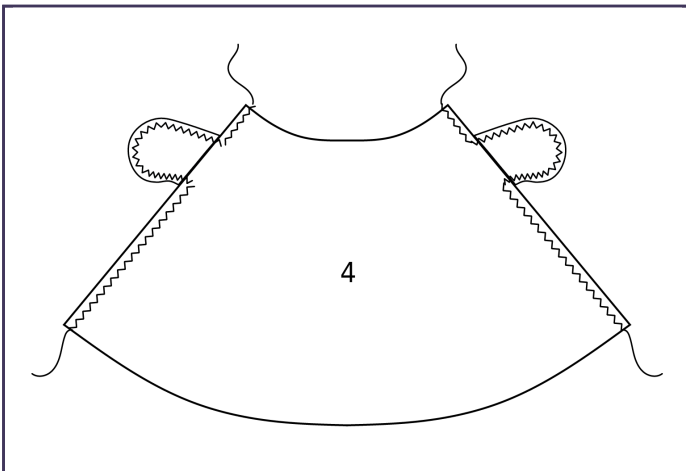
STEP ONE:

Cut 4 pockets. Place 2 pockets on one skirt piece, at side seams, right sides together, and 3" (7.5 cm) down from waist. Pin, and sew at 3/8" (1cm) seam allowance.



STEP TWO:

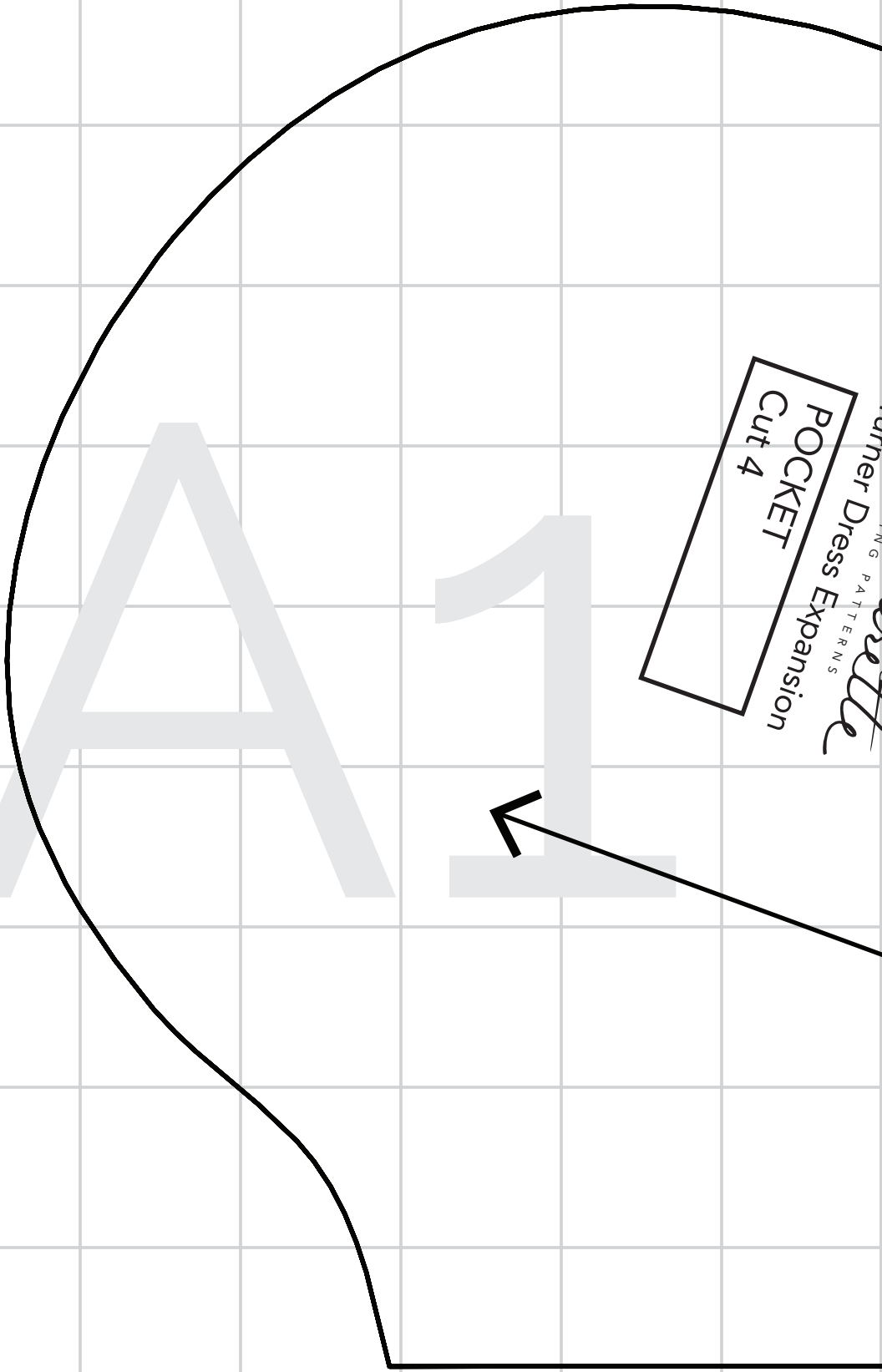
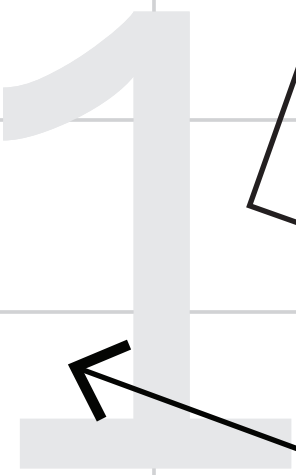
Press pockets away from skirt. Understitch pocket to skirt seam allowance, at a 1/8" (3mm) seam allowance. Repeat steps one and two with remaining pockets and skirt piece.



STEP THREE:

Pin skirts together at side seams. Sew side seams, starting at waist, pivoting at pocket, continuing around pocket, and down to hem. Finish seams and press.

POCKET
Cut 4



Time
Cashmere
SEW

A2

